

Don't miss out on special early bird discounts for returnee and new participants!

[View this email in your browser](#)



## 9th Annual In-Touch International Acupuncture & Moxibustion Seminar

November 1-8, 2018

"Everybody wonders how people get so talented and skilled. It's just time and work."  
-Japanese proverb



**Don't miss out on special early bird discounts!**

Building on our incredible tour in 2017, the 9th Annual In-Touch tour promises to give both past and new participants incredible insites and techniques in varied Japanese acupuncture and moxibustion traditions.

Our all star lineup is not one to miss.

Interested in checking out our teachers? Then please go to the [intouchjapan.org](http://intouchjapan.org) website for more info.

Sign up now to receive \$200 off your tuition!

Regular program = 35 CEUs  
Optional (additional) program = 7 CEUs (Total 42 CEUs)

**REGISTER NOW**

JAPAN 9 - Payment Plan		Feb	Mar	Apr	May	Jun	Jul	Aug	Sep	Oct
Early-bird discount: \$1,500 (*\$500 deposit)	\$500	Deposit due before 4/30 → Non-refundable after 5/1								
	\$1,000	Balance due before 7/31 → Non-refundable after 8/1								
Regular fee: \$1,700 (*\$500 deposit)	\$500	Deposit before 7/31 → Non-refundable after 8/1								
	\$1,200	Balance due before 9/30 → Non-refundable after 10/1								

- Failure to make full payment before 7/31 (early-bird) and 9/30 (regular) is subject to cancellation
- Late cancellations due to medical emergency:
  - Option 1: \$1,000 after deducting non-refundable deposit of \$500 will be refunded when the supporting documentation is provided
  - Option 2: Full amount will be credited to the future seminar when supporting documentation is provided
- Late cancellations due to other personal issues:
  - Partial credit to a future seminar will be considered depending on a situation

*November 1 \*Thursday\*: Orientation*

*November 2 \*Friday\*: Funamizu Sensei*  
Learn and practice Funamizu style teishin contact



needling to treat psychological disorders.



*Miyakawa Sensei* November 3 *\*Saturday\**:  
Learn traditional Japanese acupuncture palpation and gentle moxa treatment with a focus on gynecology.



*November 4 \*Sunday\*: Tsuda Sensei*  
Learn the theory and utilization of Meridian Therapy contact needling with silver needles in the treatment of oncology and stress care.

*November 5 \*Monday\*: Travel to the Island of Shikoku*



*November 6 \*Tuesday\*: Oasa Sensei \*Optional\**  
Learn Meridian Therapy based facial acupuncture using fine needles to reduce stress and beautify the body.



*November 7 \*Wednesday\* Sensei's Murata & Sato*  
The main deshi of Shudo Sensei will be teaching the fundamentals and application of Meridian Therapy. Shudo Sensei may attend this lecture.

*November 8 \*Thursday\*: Miyawaki Sensei*  
Learn Meridian Therapy pulse and hara diagnosis and root treatment from this Meridian Therapy 8



extra meridian master.

## Testimonials

---

"What I saw, and what I learned, were the incredible hand techniques using teishin, light and superficial needling and moxa, both direct and indirect. This is acupuncture as an art, demanding skill and finesse by the practitioner. I recommend anyone interested in training with advanced masters in Japan to attend this seminar."

-Jake Paul Fratkin, OMD, LA.c. (Japan 6, 2015)

Check out Jake's Full article on [Acupuncture Today!](#)

---

"...My palpation skills had become more trustworthy and accurate. The way I carry myself during sessions with my clients also feels more sacred and effortless...I am honestly looking forward to the next study opportunity."

-Reza Gunawan (Japan 6, 2015)

Please check out Reza's full article in the current issue of NAJOM! or at [nipponhari.blogspot.com](http://nipponhari.blogspot.com)

---

"Not only was the one of the best clinical seminars that I have attended, it was also one of the most extraordinary cultural journeys on which I have ever embarked."

-David Jung Seto, MD (Japan 5, 2014)

### Staff

#### **Stephen Brown, L.Ac.**

[Stephen Brown](#) is a licensed shiatsu and acupuncture practitioner born and raised in Japan. Graduating from Japan Central Acupuncture College in 1983, he studied with renowned masters including Fukushima Kodo and Manaka Yoshio, and has followed Shudo Denmei since 1987.

His native linguistic talent has made him the top translator in the field of Japanese styles of acupuncture. He lives and practices in Seattle and teaches locally and internationally.



### **Yasuo Tanaka**

Our fearless leader and head of AIMC Berkeley. Tanaka San makes this tour possible with his vast experience in the acupuncture community.

As the head of AIMC he knows the acupuncture industry in Japan and the U.S. perhaps better than anyone.



### **Jeffrey Dann, Ph.D., L.Ac.**

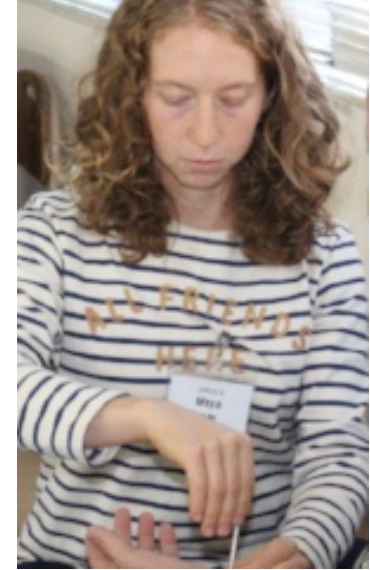
[Jeffrey Dann](#) started acupuncture in 1980 with Wang Ju-Yi in Beijing and Gary Butt in Hong Kong. While doing anthropological fieldwork in the mid 70's on Mind-Body training in Japan, he studied Kendo, Naginata-do and Iaido while also studying Seitai Ho and Shiatsu. Jeffrey has a unique therapeutic style integrating Osteopathic Visceral Manipulation with Japanese style acupuncture. He recently taught structural acupuncture with Japanese techniques at the Beijing University of Chinese Medicine. Jeffrey is in demand as a national and international teacher and has taught in Istanbul Medical Acupuncture Association of Turkey as well as the Beijing University of Chinese Medicine.



### **Heather "Maya" Suzuki**

Heather Maya is a trained and licensed acupuncture and moxibustion specialist in Japan and the United States.

She is currently a mid-level practitioner in the Iyashi No Michi acupuncture group and Tanioka style shonishin. She currently runs a pediatric speciality clinic, [Bumble Bee Acupuncture](#) in Colorado, teaches Japanese acupuncture fundamentals, and is a part-time translator and interpreter from Japanese to English.



---

## WHEN TO COME

We will have a group orientation meeting at the Goto Medical Sciences building on the late afternoon of November 1st. We will walk together as a group from the Omori REI hotel at Omori Station to the Goto school. At the orientation we'll do self introductions and lay out the details of the days to come. The full program will begin on November 2nd. A welcome dinner will be hosted on November 3 and partners and kids are welcome (additional cost).

The IN-TOUCH program is fast paced and detailed. We strongly recommend that people come several days earlier to normalize from jet-lag. It is embarrassing and disrespectful to fall asleep at any time during the seminar but especially on the first day of classes.

We suggest coming 3 days before the November 1st start up. Tokyo is a dynamic fascinating city and well worth several days for enjoying the culture and the sights. The Japan 9 program is in Tokyo for only 3 days and then off by Shinkansen Bullet train to Shikoku Island. The program does not have allotted time for people to explore Tokyo and fascinating outlying areas such as Nikko. Therefore we do recommend coming earlier enough to explore some tourist interests, to acclimate yourself to getting around in Japanese culture, and to get yourself over jet lag so you can be fully rested and alert for the start of the program.

---

## HOTEL RESERVATIONS

Hotel Reservations at the below discounted rates



have been made in advance for Shikoku only. All participants will be responsible for hotel reservations in Tokyo. We recommend booking a hotel in Omori, Tokyo.

Hotel bookings for SHIKOKU ONLY will be taken after signup.

Utazu, Shikoku ( Sunroute Seto-Ohashi)

Rate: Single 4,500Yen (\$41) Double 9,000Yen (\$82) \* Inclusive of services and taxes

Breakfast (buffet): Included

---

## TRANSPORTATION COSTS

Airfare, food and transportation is not included in costs. The welcome dinner and a farewell dinner parties are included (2 meals). Vegetarian friendly menus are available at the both restaurants. **If you may have a special request for your food, please advise us in advance.**

Travel to Shikoku Island is also not included and for that and most travel in Japan a Japan rail Pass is really worth it. A one week rail pass is about \$240 and a 2 week pass is also under \$500. Prices vary slightly due to changing currency rates.

---

## CANCELLATION POLICY

As for any disaster related events (unlikely) and cancellations we recommend, if you are concerned, you cover your flight expenses with travel cancellation insurance. If a disaster happened before arrival in Japan, refunds are applied. The administration fee is \$350 shall be charged for the refund.

While we do not anticipate any Fukushima events or elevations in background radiation, the second half of the program is considerably further south from Tokyo and not in the prevailing wind patterns of Tokyo and Fukushima's northern location. In the event of an earthquake or disaster we of course would work to secure people's

safety and if possible relocate further south to a secure area. As an "act of god" natural disasters cannot be guaranteed coverage for the program and as there are too many possible scenarios to be considered. Our sponsors and schools in the event of a disaster would certainly do their personal utmost to provide assistance and support for participants' safety.

**REGISTER NOW**

[Registration and payment available via credit card online](#)

**Please address payment inquiries to [ytanaka@aimc.edu](mailto:ytanaka@aimc.edu)**



---

**Sponsors**

Acupuncture and Integrative Medicine College (AIMC), Berkeley  
International Institute of Health and Human Services, Berkeley

**Collaborators**

Goto College of Medical Arts and Sciences

**Organizations**

Shikoku Medical College  
Meridian Therapy Association